

Network Operational Risk Manager (n-ORM)

Quantar's network operational risk manager (n-ORM) is a unique two-part system, utilizing patented technologies, to collect, aggregate, analyze and report on the values at risk arising from the interdependencies between business process operations and embedded technology.

Compliance

The risks of non-compliance with various regulations have been creating new burdens upon GRC teams. Increasing complexity, greater reporting requirements and a requirement to demonstrate both compliance and adherence methodologies are being imposed.

This regulatory challenge is best met with simple and easy to use, automated quantification tools. n-ORM provides the solution to providing and explaining operational values at risk arising from business process and technology interdependencies whilst giving oversight.

Event tracking, with reporting functionality provides audit and compliance data in a simple and efficient manner. n-ORM is offered as a standard ready to install package, incorporating all requisite components for enterprise-wide deployment.

Risk Management

Enabling internal audit teams to deliver critical information to both management and compliance units creates the operational transparency required to recognize process improvement opportunities. n-ORM's *Infrastructure Manager* maps your organizations business processes, technology, and threats posed to continuity of operations.

Using n-ORM to acquire organization-specific threat data combined with internal and external data can, when used in conjunction with n-

Benefits

Determines risk exposure of critical assets and business processes.

Enables accurate prioritization of risk mitigation options that reduce exposure to suit risk appetite or for compliance.

Identifies the most cost-effective risk management options for capital allocation efficiency.

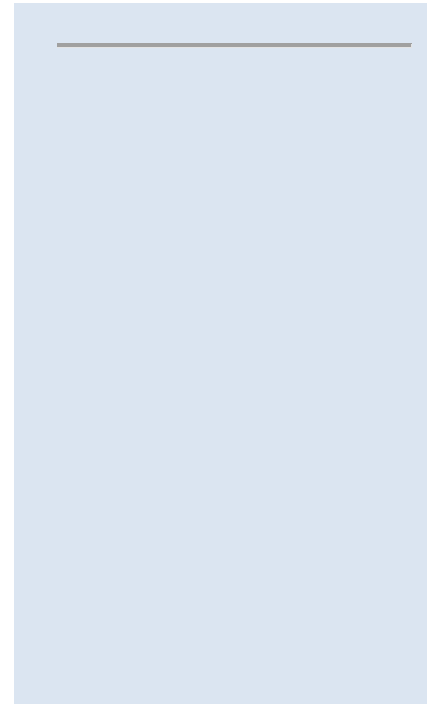
Provides clarity and transparency ensuring management oversight and regulatory compliance.

Rapid deployment with intuitive interface ensuring rapid deployment and low cost of ownership.

ORM business process mapping facility, lead to identification of potential operational efficiency enhancements.

Utilizing a multidimensional framework for both the acquisition and integration of data specific to your organization, a complete overview of operational risks arising from business process and technology interdependency is delivered in a clear, concise and easy to interpret manner.

Import and export functions allow multi-site, SBU and geographic usage as well as an aggregation capability for key risk management personnel. Infrastructure manager, with its' intuitive user-friendly interface facilitates rapid business process mapping throughout your organization.



Modules:

- **Capital Modelling:**

n-ORM's capital modelling provides a bottom-up method for aggregating loss calculations and facilitates assessment of the cost-benefit of undertaking individual risk mitigation actions, enhancing risk management effectiveness.

- **Systems Configurator:**

Offers user-defined parameter settings for the location of scenarios, risk data location, currencies, time zones, period of risk being assessed, outsourcing weighting factor, language option, and acceptable variance to VaR thresholds.

- **Infrastructure Manager:**

Drag-and-drop module facilitating business process mapping against your organizations' systems and locations/departments. User defined inputs for severity versus downtime, outsourced weightings, and process profiles. A high degree of granularity and accuracy can be achieved in mapping your organization. As a stand-alone component, infrastructure manager can be distributed widely, with little training, and output aggregated to a central location/person for enterprise-wide mapping.

- **Physical Attack Configurator:**

User-defined types of attack and impact on your organization. Examples are flood, fire, power outage, insider attacks, vandalism, terrorist threat, etc.

- **Reports Module:**

Easy to view, understand and explain visual

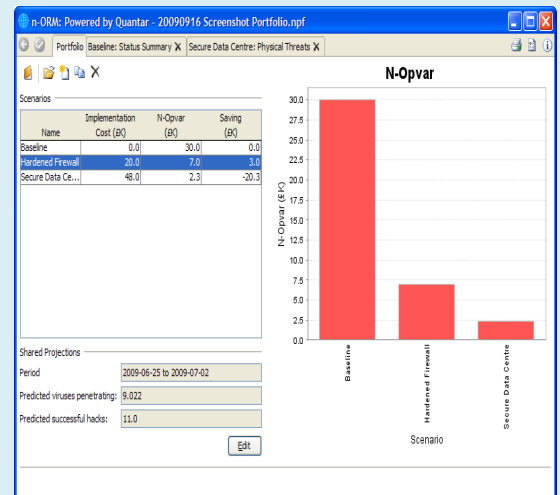


Fig 1. Main Portfolio Page with VaR for Three Risk Mitigation Scenarios.

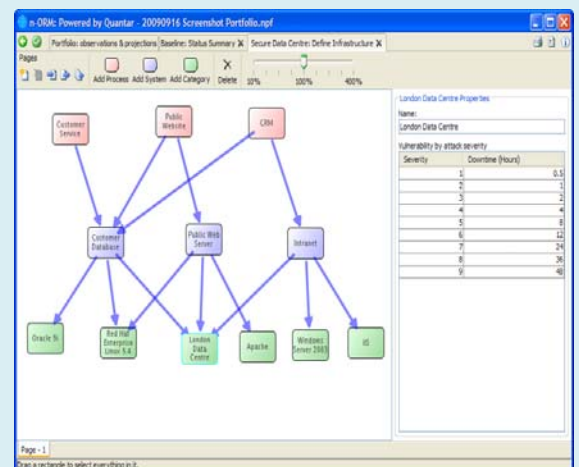
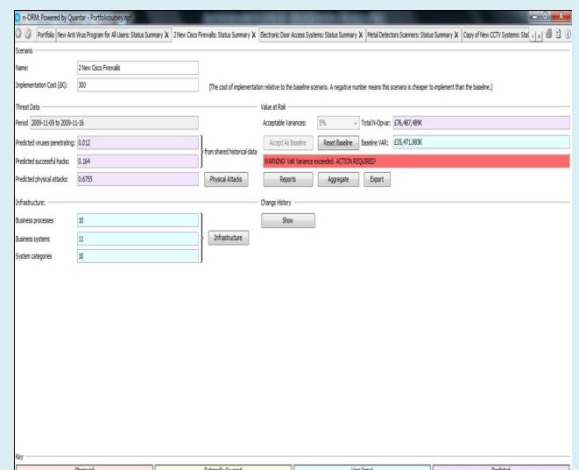


Fig 2. Drag-and-Drop Infrastructure Manager GUI



overviews of your organization's operational value at risk status. Filtering, trend analysis per process or location.

- **Scenario Change:**

System log of all system changes, from configuration onwards, for complete audit and compliance transparency and traceability.

Fig 3. Main Configuration Page with Variance Threshold Settings

